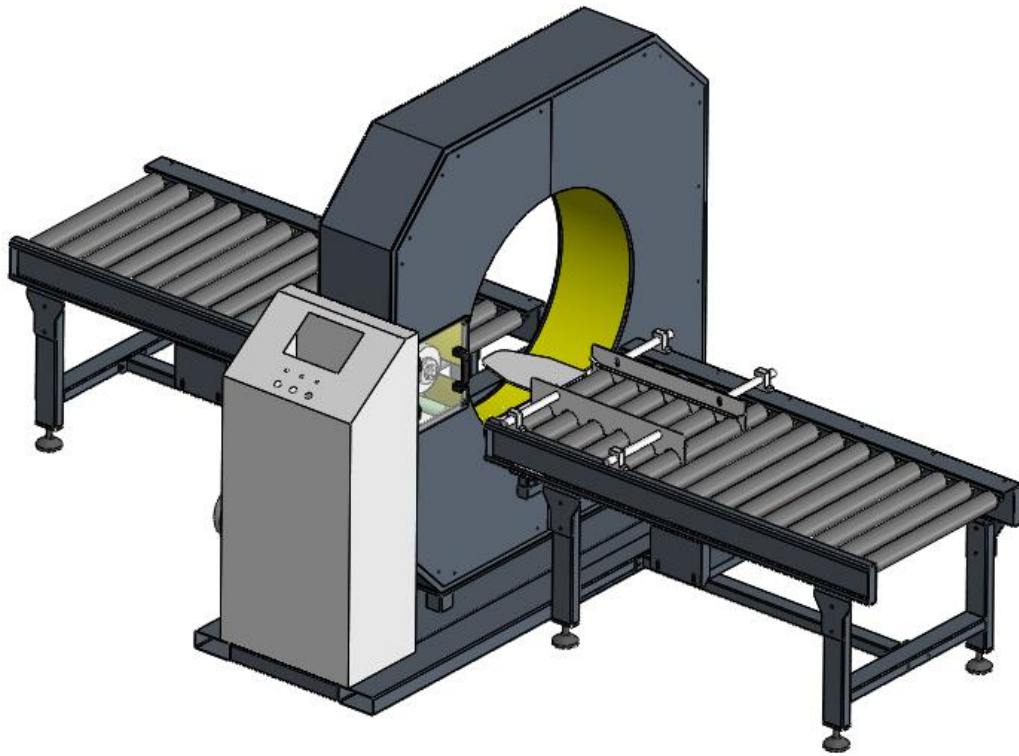


**E200/E300/E400 MODEL**

**Horizontal Wrapping Machine**

一、A p p l i c a t i o n.....	3
二、I m p o r t a n t N o t i c e.....	3
三、T e c h n i c a l P a r a m e t e r.....	4
四、I n s t a l l a t i o n.....	5
五、U s a g e o f M a c h i n e.....	10
六、D e f a u l t & S o l u t i o n.....	16



---

## 1. USAGE

FHOPE-400 horizontal wrapping machine specially wraps four sides of objects for aluminum profile and furniture. YK Series Stretch wrapping machines are used to wrap stretch film around a loaded pallet.

Film provides extra support while the products are being transported & stored to protect them from tip, spill or from being damaged. Additionally, wrapped loads can easily be separated and identified. Horizontal wrapper wraps products that won't fit on a turntable, require banding, compression or extra packing for shipment. It has a proven record of success in many industries such as profiled product, tubular product and plank stuff door/window etc. We offers a wide variety of options to meet your specific requirements. Each applications is evaluated to provide the right solution to your needs Automatic wrapping machine with rotating crown to apply stretch film for continuous wrapping or with strips. This packaging system is very economical.

## 2. Important Notice

1. Illegal operation, Serious consequence
2. Be sure to connect electricity on the ground.
3. When the machine gets default, pls do troubleshooting efforts before turn off emergency or main power and identify possibility.
4. Do not change program of host machine and related setting.
5. Do not tear off any specimen on the machine.

6. Do not open cabinet on work.

7. Do not stand under packing routine on work.

8. The furniture has to locate at middle of conveyor before adjusting double guide rollers.

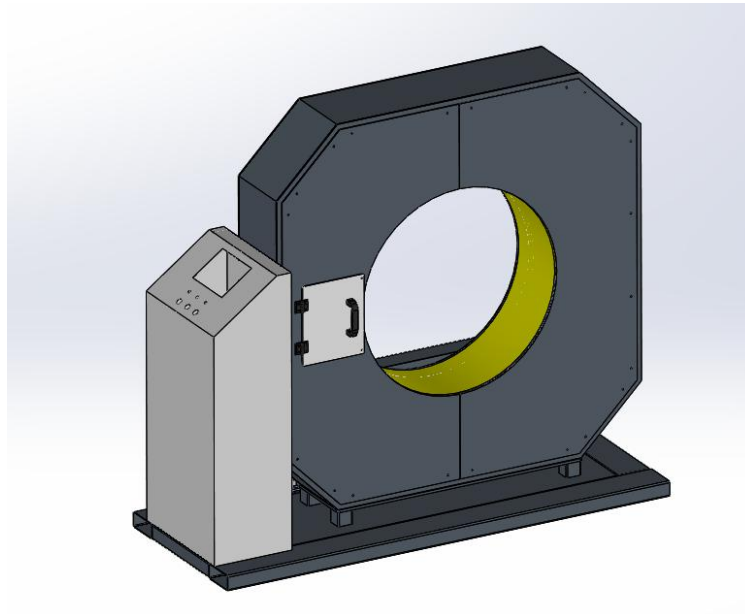
### 3. Technical Parameter

#### Model FHOPE-400

<b>No. of packing material</b>	PVC/Stretch film OD:100-300mm ID:76mm Width:150-250mm
<b>Bundle size</b>	100-410mm
<b>Length</b>	>1200mm
<b>Main wrapping speed(high/low)</b>	1-13m/min
<b>Max speed of ring</b>	10-90r
<b>In&amp;out feeding conveyors</b>	2m x2 pcs
<b>Power supply(high/low)</b>	380V 50Hz 3PHASE
<b>Air Supply</b>	6kgf/cm <sup>2</sup>
<b>Max. Weight</b>	10-100kg

### 4. Installation

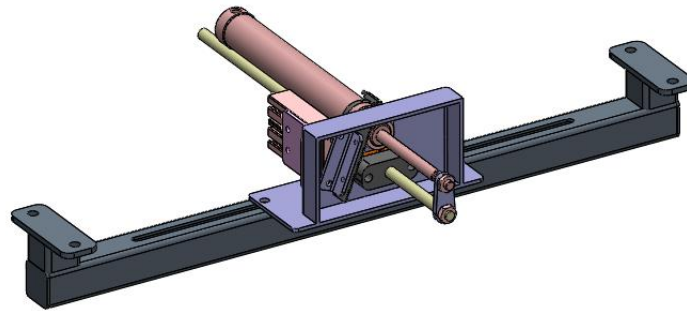
#### (1) Host Machine



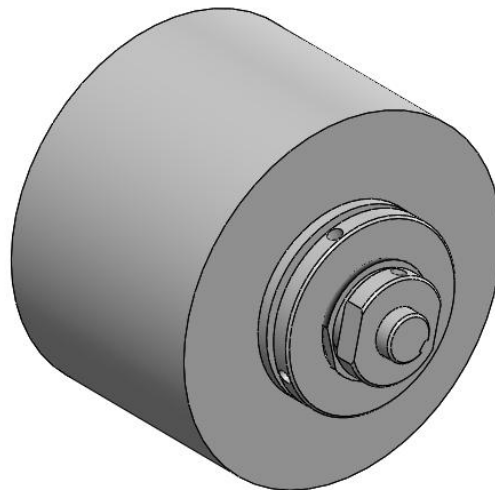
**(2) Infeed and Outfeed conveyoyr**



**(3) Film clamp&Cutter system**



#### (4) Film Holder



1. Horizontal wrapper is made of host machine, infeed/outfeed conveyor, automatic film clamp & cutter and electricity.

2. Keeping construction of host machine horizontally stand on the ground, then connect conveyor, film

clamp cutter system and cabinet with host machine and install extra small parts for whole machine.

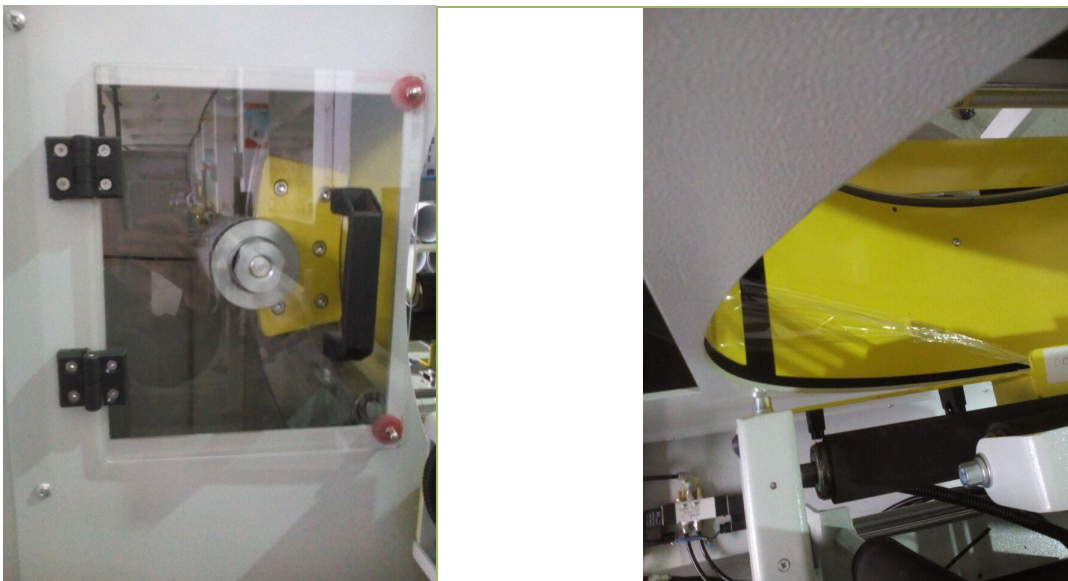
3. It's necessary to check all of moving parts manually after before installation.

The main power switch must turn off for installation.

Do not allow unprofessional person go into installation place.

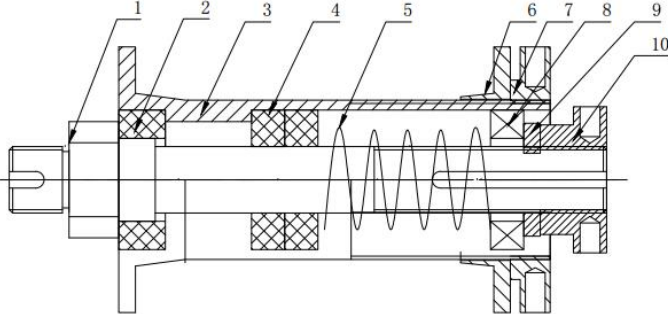
Make sure all installation work finish, then go into next step.

## 5. Usage of machine



Film spool

Film Way



使用流程说明

- 1 装配如图所示,
- 2 先拆下6和7, 然后套上膜卷, 再装上6和7, 旋紧, 使膜卷跟6没有相对运动, 按照说明书上穿膜方式进行穿膜.
- 3 拉一拉膜, 看看出膜涨紧力是否合适, 如果不合适, 旋转10, 使涨紧力达到合适。

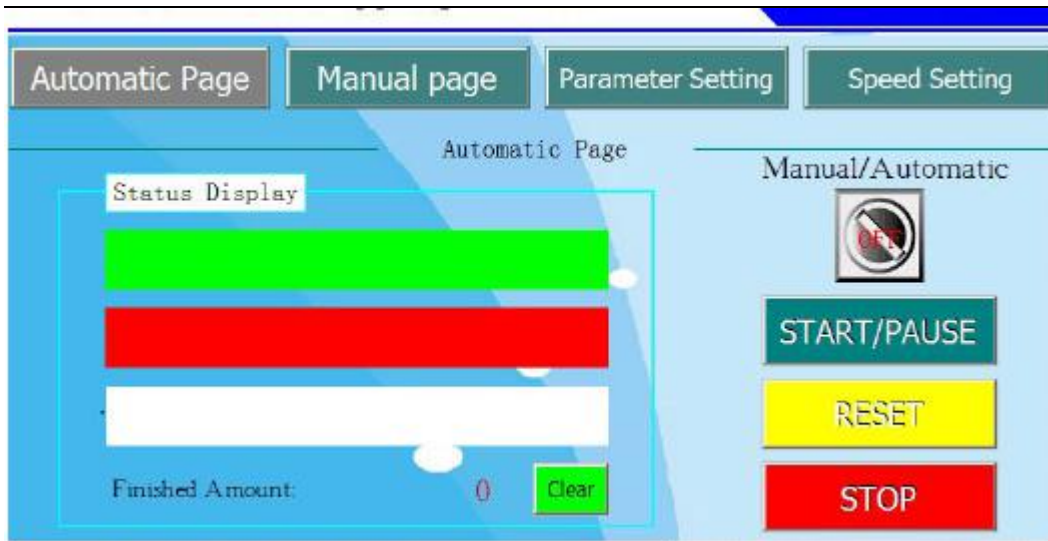
10	出膜螺母	YK-CR31-03-1012	1	
9	出膜薄片	YK-CR31-03-1011	1	
8	推力球轴承	51104	1	
7	出膜螺母	YK-CR38-03-008	1	
6	夹膜片	YK-CR38-03-007	1	
5	弹簧	5*3*60	1	
4	出膜限位块02	YK-CR31-03-1010	2	
3	放膜导棍	YK-CR38-03-006	1	
2	出膜限位块01	YK-CR31-03-1009	1	
1	放膜轴	YK-CR38-03-005	1	
序号	名称	图号	数量	备注
设计		材料	姓名 放膜轴安装图	
CAD			编号 YK-CR38-03-013	
工艺		数量 1	元旭包装(上海)有限公司	
标准化		重量		
审核		比例		
批准		共 张 第 张		

Film spool

### 3. Operation Instruction

Model and name of machine show on the homepage. Press "welcome" enter operation page. Four pages for proper functions on the homepage.

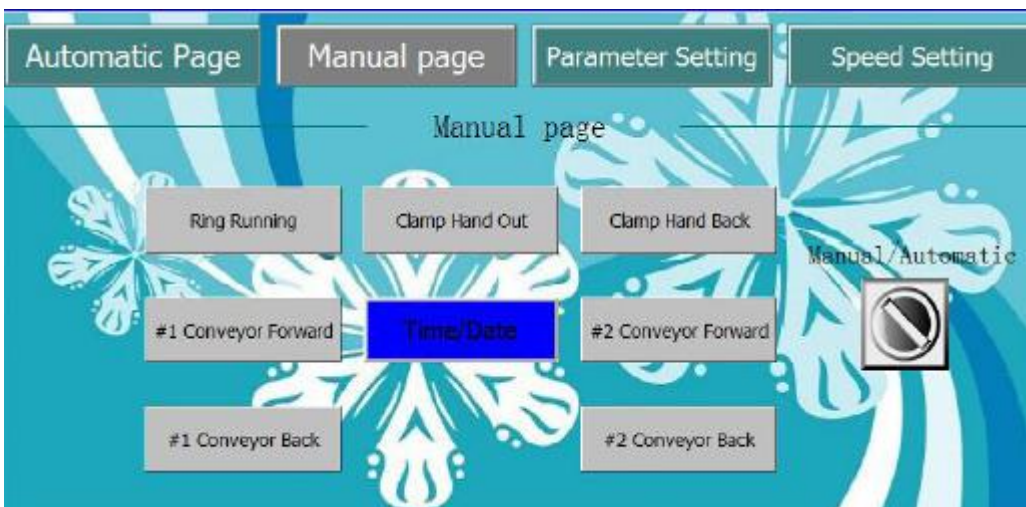




Automatic Page shows status display, finished amount and other manual functions. When machine works on the automatic model,



Automatic function should be turned on as below:



Manual page especially works for single pack or test machine before automation.

Above functions cannot be worked at the same time under manual model. When an operator wants to work on the manual model, press to turn on the manual button



firstly.



the layers of wrapping could be set ,which first sensor on the infeed conveyor detect object and stop there for wrapping work.

#### The Back of Object Wrap Number:

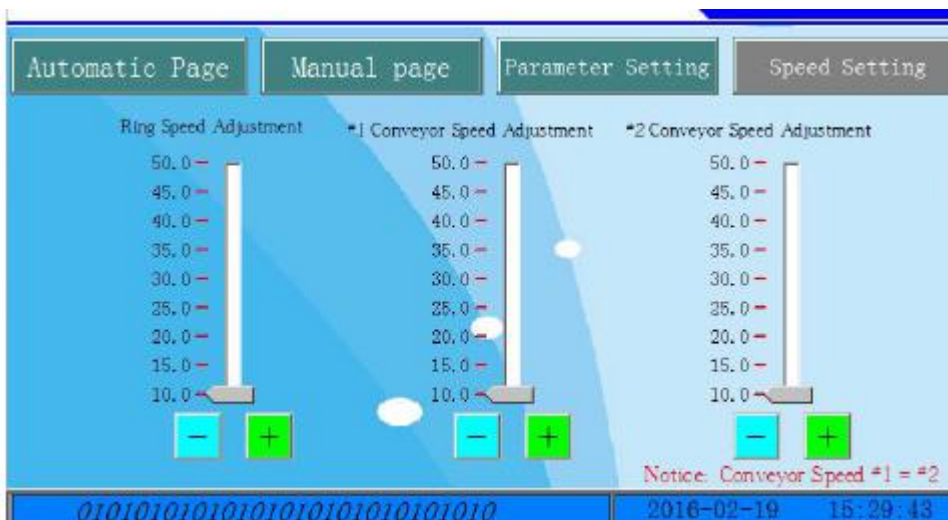
The layers of wrapping could be set ,which first sensor on the outfeed conveyor detect object and stop at position for wrapping work.

#### The Top Conveying Delay:

The delay time that infeed conveyor still go forward after object be detected .

#### The Back Conveying Delay:

The delay time that outfeed conveyor still go forward after object be detected.



#### Conveyor Speed #1 = #2

#1=#2 conveyor speed is same to make sure object can move on conveyor smoothly.

### 3.Operation Instruction.

(1) Connecting with electricity.

- (2) Setting parameters and Hz according to actual demand.
- (3) Auto Model start.
- (4) Turn on emergency
- (5) Loading furniture on the conveyor.
- (6) Film clamp on the manually firstly.
- (7) Press button of conveyor start or machine start,machine will work automatically.
- (8) Upload furniture from conveyor and pack again..

## **6.Common faults and solutions**

### **faults reasons and counter-measures**

Machine doesn't work

※Circle rings don't work or running un-smoothly

1.Check the status of friction wheel,do change with new wheels if it was damaged seriously .

2.Adjust the friction between wheel and ring circle. If friction wheels pressed tight , ring circle power would be bigger.

3.Friction Wheels pressure to the ringcircle is not  
Packing tape too tight or release onto object.

1.adjust the film seat.

※ Ring circle doesnot run when we start the machine

1.Check the power supply

2.check the motor and inverter

※ Machine stopped suddenly while wrapping processing.

1.check the fault reason which show on the screen, and check the motor and wire connection.

※ packing tapes with many wrinkles。

1.Packing tape feeding route in a straight line or not

2.check ring and conveying speed match status

3.Check the packing tape quality good or not

※Unable to adjust overlap rate of packing tape.

1.Change speed ( "swivel speed" and "roller speed ") which show in the touch screen , check the inverter speed show inside the control carbinet,if digit of inverter and speed in screen show different, pls check the communication wire between touchable screen and inverter